



# ASPIRE

CALIFORNIA REGIONAL  
COLLABORATIVE

## ANNOUNCEMENTS

### Aspire Alliance Resources for Advancing Diversity, Equity, and Inclusion on Campus

The Aspire Alliance, an APLU co-led effort to develop a more diverse and inclusive STEM faculty nationally, has released three new resources aimed at helping institutions advance diversity, equity, and inclusion on campus.



# ASPIRE

THE NATIONAL ALLIANCE FOR  
INCLUSIVE & DIVERSE STEM FACULTY

- [Resource Guide: Practicing Diversity, Equity, And Inclusion at Postsecondary Institutions During & After COVID-19](#)
- [The Time Is Now: Strategies to Address Racism, Equity, and the Retention of Black Faculty](#)
- [Resource Guide: Supporting Faculty with Disabilities at Postsecondary Institutions](#)
- [Report: LGBT+ Faculty Retention in STEM Disciplines at Postsecondary Institutions in the United States.](#)



**The California State University**  
READ TO LEARN

### STEM Instructors Learning Community, 2021-2022

Join the Apprenticing Students into STEM Thinking effort. Be part of a supportive improvement community to exchange ideas and materials as the group navigates new contexts for teaching and learning. Over a ten-month professional learning course, you will learn tools to set students up for success in your STEM classrooms. [Learn more here.](#)

### 3CSN Wayfinding Online Zoom Series

Join the [California Community College Success Network](#) (3CSN) for their ongoing workshop series. New events will be offered every week.



### Equity 101 Summer 2021

In this [8-week online course](#) you will learn teaching and learning perspectives for equity and will reflect, collaborate, and deepen your practice.

### 3CSN Summer 2021 Design Lab

This summer, 3CSN is offering free [multi-part online design labs](#). Participants who attend and complete all parts of a lab will earn a professional learning badge.

## COMMUNITY COLLEGE CORNER

This [Fellowship](#) will provide post-baccalaureate students interested in teaching in a 2-year college with an opportunity to participate in a Faculty Fellowship Program. This program will provide candidates a mentorship collaboration with a Bakersfield College faculty.

## **California Virtual Campus and California Community College @One Online Teaching Course Catalog**



California  
Community  
Colleges

California  
Virtual Campus

Looking to get more experience and training in Online Teaching? Get certified for the California Community College system today by participating in these upcoming [@ONE courses and workshops](#)! Also check out the [Cultural Curriculum Audit](#) (CCA).

The [California Virtual Campus \(CVC\)](#)'s summer course schedule is also open for registration! Several courses are being offered.



**Featured Article:**

### **Beyond Lectures: Synchronous Student-to-Student Interaction**

"The theme of this four-part "Note from the Field" blog series has been humanizing online teaching and learning with an equity-minded lens. Michelle Pacansky-Brock, the highly-acclaimed CVC-OEI Online Teaching and Learning Faculty Mentor, writes, "In humanized online courses, positive instructor-student relationships are prioritized and serve as the connective tissue between students, engagement, and rigor." [Read more](#).

## **Community College News**

- [Conference Brings Community College Issues to the Forefront](#)
- [Happy Together? The Peer Effects of Dual Enrollment Students on Community College Student Outcomes](#)
- [Achieving the Dream Announces Research Agenda for Community College Women Succeed Initiative](#)
- [Strengthening Community College Workforce Training](#)



## **WORKING TOWARDS STUDENT EQUITY IN HIGHER ED**



### **Celebrating Asian American and Pacific Islander History Month**

This month America celebrates Asian American and Pacific Islander (AAPI) History Month. In this age of heightened anti-Asian racism and violence, it's important to take some time and learn about, celebrate, and appreciate AAPI history.

[View this UCLA Newsroom Article to learn more.](#)

**Featured Event:**

### **Academics for Black Survival and Wellness**

**June 18th - July 3rd, 2021**

[Academics for Black Survival and Wellness](#) (A4BL) is a personal and professional development initiative for Non-Black academics to honor the toll of racial trauma on Black people, resist anti-Blackness and white supremacy, and facilitate accountability and collective action. A4BL also is a space for healing and wellness for Black people.



WWW.ACADEMICSBLACKLIVES.COM  
INSTAGRAM: @ACADEMICSBLACKLIVES / TWITTER: @ACADEMICSBLACKLIVES

## Colleges in Action Anti-Racist Reading Group: Ibram X. Kendi

June 4th, 10 am PST

Join 3CSN coordinators Lauren Servais and Nika Hogan for reading and discussion surrounding the work of renowned scholar Ibram X. Kendi.

[Learn more here.](#)

## Equity Is A Journey: Advancing Equitable Placement, Championing Student Success & Supporting Faculty Professional Development

June 9th and 10th

[Learn more here.](#)



### Free Self-Paced Course

## The Inclusive STEM Teaching Project 6-Week Course

The [Inclusive STEM Teaching Project](#) is a 6 week course designed to advance the awareness, self-efficacy, and the ability of faculty, postdocs, and doctoral students to cultivate inclusive STEM learning environments for all their students and to develop themselves as reflective, inclusive practitioners. [Learn more here.](#)

### Featured Article

## The Single Biggest Equity Issue in Higher Education

"If you didn't pass advanced math, chemistry and physics in high school, it is unlikely that you can succeed in today's high-demand fields: accounting, computer science, engineering, nursing and a host of STEM disciplines. In fact, one of the reasons why a disproportionate share of men drop out of college is because of a misguided belief that they can succeed in fields for which they were ill prepared in high school. Persistence and perseverance may be ethical virtues, but these can be counterproductive if the end result is to instill a sense of failure." [Read more here.](#)



## NameDrop Name Pronunciation Service

Mispronouncing a student's name can have negative consequences. [Check out this tool](#) to help you learn students' names.

## Letter of Recommendation Gender Bias Calculator

Use this [calculator](#) to help mitigate gender bias that may show up in the Letters of Recommendation that you write.

## Building Racial and Gender Equity

- [How Can We Increase Diversity in STEM? Support Students](#)
- [Report Offers Solutions to Increase Racial Equity in Math Pathways](#)
- [A Year Later, Institutions Reflect on Systemic Changes Following the Murder of George Floyd](#)
- [First-Generation College Graduates Lag Behind Their Peers on Key Economic Outcomes](#)



# REMOTE TEACHING RESOURCES

## Online Learning Resources

In response to the COVID-19 pandemic, many colleges and universities shuttered their physical campuses and ordered instructional faculty to migrate courses online. The National Communication Association's (NCA) Teaching & Learning Council, in collaboration with the NCA National Office staff, developed this list of online teaching & learning resources in infographic format.

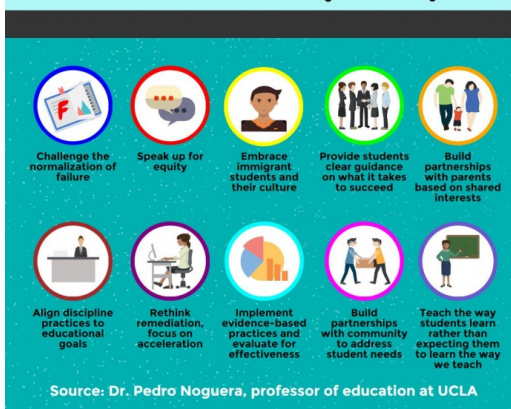
See some infographics below:

[10 ways to pursue excellence through equity](#)

[7 tips for remote teaching](#)

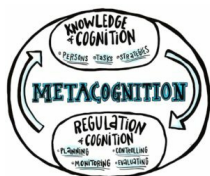
[Diversity Asks, Equity responds](#)

## 10 Ways to Pursue Excellence through Equity



## CourseSource: Evidence-based teaching

"CourseSource is an open-access journal of peer-reviewed teaching resources for undergraduate biological sciences. They publish articles that are organized around courses in biological disciplines and aligned with learning goals established by professional societies representing those disciplines." [Find out more here.](#)



### Featured Article:

## [Fostering Metacognition to Support Student Learning and Performance](#)

"Metacognition is awareness and control of thinking for learning. Strong metacognitive skills have the power to impact student learning and performance. While metacognition can develop over time with practice, many students struggle to meaningfully engage in metacognitive processes.

In an evidence-based teaching guide associated with this paper, we outline the reasons metacognition is critical for learning and summarize relevant research on this topic. We focus on three main areas in which faculty can foster students' metacognition: supporting student learning strategies (i.e., study skills), encouraging monitoring and control of learning, and promoting social metacognition during group work. We distill insights from key papers into general recommendations for instruction, as well as a special list of four recommendations that instructors can implement in any course. We encourage both instructors and researchers to target metacognition to help students improve their learning and performance." [Read more.](#)

## Remote Teaching in the News

- [Zoom Gave my Teaching New Life](#)
- [Teaching: Giving students "time and space" to process](#)
- [Resources to help with remote learning](#)
- [Students want online learning options post-pandemic](#)



## FACULTY LIFE



### Featured Resource:

## [Fostering Peer Engagement in a Remote Workplace](#)

"It's been more than a year since much of the world transitioned to remote workplaces, and it's still unclear when employees will be back onsite in large numbers. At first, working from home may have seemed like a nice change from the daily commute. But as time went on, many of us found ourselves missing the casual workplace connections we'd taken for granted. Without face-to-face interaction, it becomes harder to stay engaged. Here are a

few ways to foster peer engagement in a remote workplace." [Read more.](#)

### Featured Article:

## [Academics give advice to their younger selves](#)



Academics from around the world have responded to a tweet asking them what they would say to their younger selves. Advice was given on everything from submitting a dissertation to how to handle university politics. [Enjoy their advice here.](#)

---

## Featured Article:

### [\*\*The busy lives of academics have hidden costs — and universities must take better care of their faculty members\*\*](#)

"Hilal A. Lashuel's experiences have taught him that maintaining good mental health and balancing life and work is a struggle everywhere in academia. The failure to acknowledge the interconnected and interdependent relationship between students, faculty members, staff and leaders at a university undermines not only all efforts to lift the stigma and tackle the academic mental-health crisis, but also the missions of our universities." [Read more.](#)

---

## Faculty News

- [DEI Question in Administrative Job Interviews](#)
- [Faculty Staff, & Student Diversity in the California Community College System](#)
- [Addressing low representation of Black Teachers](#)
- [How to help students struggling with Mental Health](#)



---

## WEBINARS AND WORKSHOPS

---

### Summer Institutes of Scientific Teaching: Friday Happy Hours

- Jun 4: ["Making Thinking Visible: Teaching routines as a window into student thinking"](#)
  - Jun 11: ["Word Puzzles and Games to Engage Students Learning the Language of their STEM Discipline"](#)
  - Jun 18: ["Using Instructor Talk to Promote a Positive Learning Environment"](#)
  - Jun 25: ["How to transform your course from a commercial textbook to an open education resource 'OER' textbook"](#)
- 

### National Summer Institutes of Scientific Teaching

[Learn more here.](#)

- Short Course
- Regional SI Small Teams
- Mobile Summer Institute



---

#### Designing for Care with Jesse Stommel of Digital Pedagogy Lab & the #RealCollege SLAC

June 2nd, 12pm PST

[Learn more here.](#)

#### Centering Diversity, Equity, and Inclusion in Undergraduate Research and Creative Activity Conference 2021

June 23-25th, 2021

[Learn more here.](#)

---



#### AAC&U 2021 Virtual Conference

### High-Impact Practices and Student Success: Enhancing Institutional Capacity for Quality, Equity, and Student Engagement

June 14-18th, 2021

[Learn more here.](#)

---

#### Re-Examining Our Relationships with our Students, Colleagues, and

#### Society for the Advancement of Biology Education Research (SABER)



## Ourselfes

June 29th - July 1st, 2021

[Learn more here.](#)

## Annual Meeting

Friday July 9th, 16th, 23rd, and 30th 2021

[Learn more here.](#)



Looking for more events?

### [Check Out the UCLA CEILS Curated Calendar of Events](#)

Looking for other online events related to inclusive teaching or student equity? Check out the [CEILS calendar of events](#) for a curated list of local and national workshops, webinars, and conferences! The calendar is updated regularly so check back often.

## REGIONAL JOB OPPORTUNITIES

Looking for jobs at local Community Colleges?

Visit the [CCC Registry!!!](#)

This website provides a number of services for individuals seeking employment as a faculty, support staff or manager at a California Community College.



### **Tenure-Track Instructor Chemistry**

Santa Clarita Community College District  
[more info here](#)

### **Assistant Teaching Professor Biological Sciences**

University of California, San Diego  
[more info here](#)

### **Director Cross Cultural Center University of California, San Diego**

[more info here](#)

### **Assistant Teaching Professor (LPSOE) Quantitative Biology**

University of California, Davis  
[more info here](#)

### **Tenure-Track Instructor Chemistry Yuba Community College District**

[more info here](#)

### **Tenure-Track Instructor Computer Science San Mateo Community College District**

[more info here](#)

### **Full-Time Instructor Psychology**

### **Tenure-Track Instructor Biology**

Santa Clarita Community College District  
[more info here](#)

### **Academic Coordinator Biology Laboratory Science University of California, Riverside**

[more info here](#)

### **Tenure-Track Instructor Geology (Earth Science) Santa Clarita Community College District**

[more info here](#)

### **Lecturer Life Science Education Learning Assistants**

University of California, Los Angeles  
[more info here](#)

### **Assistant Teaching Professor Chemistry and Biochemistry University of California, Santa Cruz**

[more info here](#)

### **Assistant Teaching Professor Chemistry and Biochemistry University of California, Santa Cruz**

[more info here](#)

### **Full-Time Instructor Psychology**

Palo Verde Community College District  
[more info here](#)

Yuba Community College District  
[more info here](#)

**DBER Postdoctoral Scholar  
Biology Educational Research**  
University of California, Irvine  
[more info here](#)

**Tenure-Track Instructional Designer  
Educational Media Technology**  
San Mateo Community College District  
[more info here](#)

**Adjunct and Part-Time Positions  
(multiple disciplines)**  
Coast Colleges  
[more info here](#)

**Adjunct and Part-Time Positions  
(multiple disciplines)**  
North Orange County Community College District  
[more info here](#)

**Adjunct and Part-Time Positions  
(multiple disciplines)**  
Los Angeles Community College District  
[more info here](#)

**Adjunct and Part-Time Positions  
(multiple disciplines)**  
Ventura County Community College District  
[more info here](#)

To have your openings posted in our newsletter, please send job announcements to  
[aspire.calrc@gmail.com](mailto:aspire.calrc@gmail.com)

## CONNECT WITH THE CALIFORNIA REGIONAL COLLABORATIVE

If your organization is a regional partner please send all inquires and announcements to  
[aspire.calrc@gmail.com](mailto:aspire.calrc@gmail.com).

If you wish to be added to the California Regional Collaborative mailing list for future newsletters and special announcements, please send your request to [aspire.calrc@gmail.com](mailto:aspire.calrc@gmail.com).

## LEARN MORE ABOUT WHAT WE DO



**ASPIRE**  
CALIFORNIA REGIONAL COLLABORATIVE

**The California Regional Collaborative** is a regional network of 2- and 4- year institutions, working together towards improving overall outcomes in STEM higher education, and in particular for students and faculty from underrepresented groups.

We work with graduate students and other potential “future faculty” from groups that are underrepresented in academia to address the need to increase diversity in our regional colleges to better reflect the diversity of our students. These trainees will support teaching efforts, education research initiatives, and curriculum development needs in collaboration with their 2- year internship site. In addition, regional programming such as webinars, symposiums, conferences, panels, and other events supports both current faculty along with future faculty. This will be coupled with an assessment plan to understand regional needs and assess the impact of our work.

The **California Regional Collaborative** is part of a network of collaboratives, national organizations, and initiatives participating in the NSF INCLUDES Aspire Alliance

Visit the [ASPIRE Alliance website](#) to learn more

Subscribe to the Aspire Alliance newsletter here: [Subscribe](#)



**ASPIRE**  
THE NATIONAL ALLIANCE FOR  
INCLUSIVE & DIVERSE STEM FACULTY



